

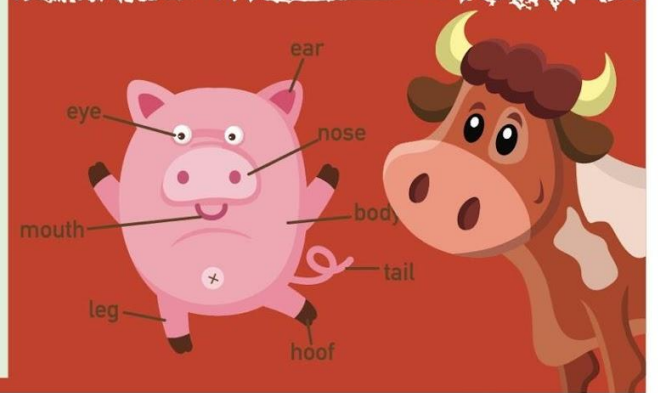
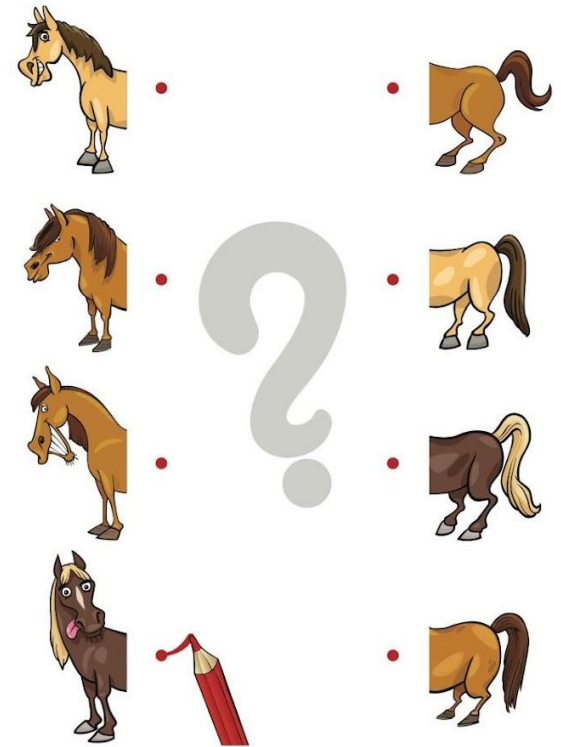


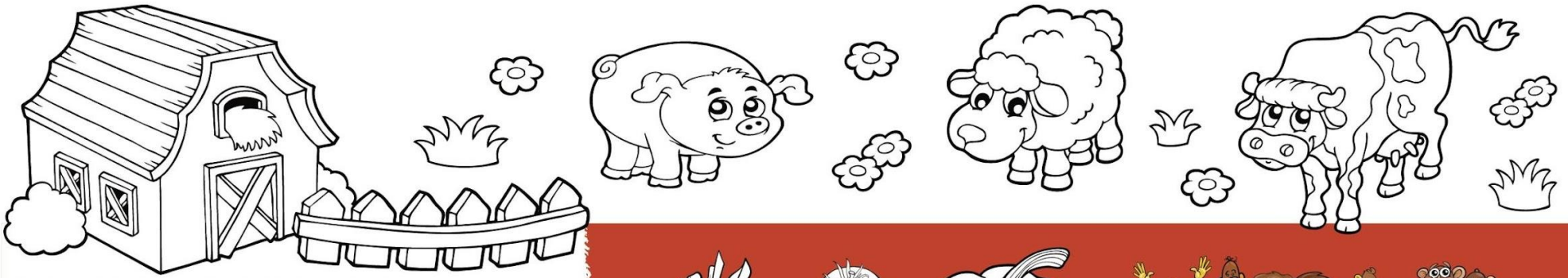
**FARMER BROWN'S
KIDS MENU \$8**

*All meals served with fries and Jell-o.
Sub salad or hash browns for \$1*

**HAMBURGER STEAK*
CHICKEN STRIPS
SPAGHETTI & MEATBALL
FRIED SHRIMP**

***WARNING: Eating raw or undercooked food may increase risk of food-borne illness.**





Horse Body Parts

C	T	S	H	O	U	L	M	U	Z
H	U	R	E	D	L	O	I	N	Z
E	N	F	W	I	T	H	E	L	L
S	T	E	K	H	O	E	D	B	E
R	N	T	C	F	O	R	O	O	W
E	P	L	O	T	A	S	C	K	F
T	O	L	L	I	M	N	A	L	
S	S	K	I	N	E	A	K	H	K
A	A	P	K	N	E	N	E	O	C
P	G	U	O	R	C	K	C	A	B

Find all the words from the word list (ignore spaces and dashes, if any):

- | | |
|-------------|----------|
| BACK | LOIN |
| CHESTNUT | MANE |
| CROUP | MUZZLE |
| DOCK | PASTERN |
| ELBOW | POLL |
| FETLOCK | SHOULDER |
| FLANK | TAIL |
| GASKIN | WITHERS |
| HOCK | |
| HOOF | |
| KNEE | |



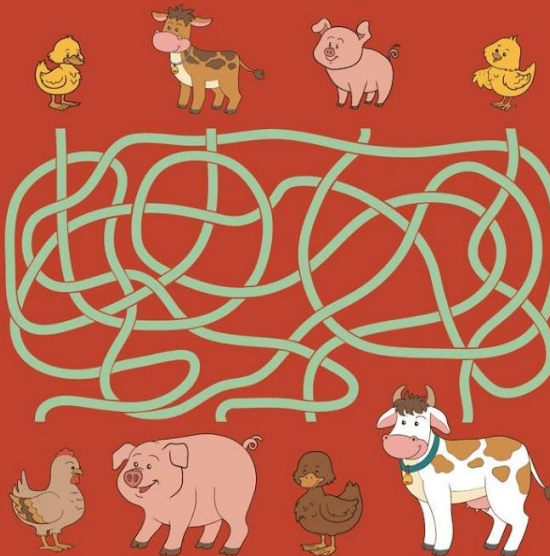
This is zigzag word search puzzle. Words go left, right, up, down, not diagonally, and can bend at a right angle. There are no unused letters in the grid, every letter is used only once.

Grid size:
10 x 10 squares,
10 x 10 letters,
90 x 90 mm.

Square size:
9 x 9 mm.

ANSWER:

P	G	U	O	R	C	K	C	A	B
A	R	K	N	E	A	K	H	K	
S	S	K	I	N	E	A	K	H	K
T	O	L	L	I	M	N	A	L	
E	P	L	O	T	A	S	C	K	F
R	N	T	C	F	O	R	O	O	W
E	N	F	W	I	T	H	E	L	L
S	T	E	K	H	O	E	D	B	E
H	U	R	E	D	L	O	I	N	Z
C	T	S	H	O	U	L	M	U	Z



? + ? = ?



? + ? = ?



? + ? = ?

0 1 2 3 4 5 6 7 8 9 + - =

10 11 12 13 14 15 16 17 18 19 20 =

0 1 2 3 4 5 6 7 8 9 + - =

Copy the picture

